

OXFORD CAMBRIDGE AND RSA EXAMINATIONS

Tuesday 17 November 2020 – Afternoon

GCSE (9–1) Music

J536/05 Listening and Appraising

Insert

**Time Allowed: up to 1 hour 30 minutes
plus your additional time allowance**

**The time allowed for the examination is the duration of
the CD.**

Please write clearly in black ink.

Centre number

--	--	--	--	--

Candidate number

--	--	--	--

First name(s) _____

Last name _____

READ INSTRUCTIONS OVERLEAF



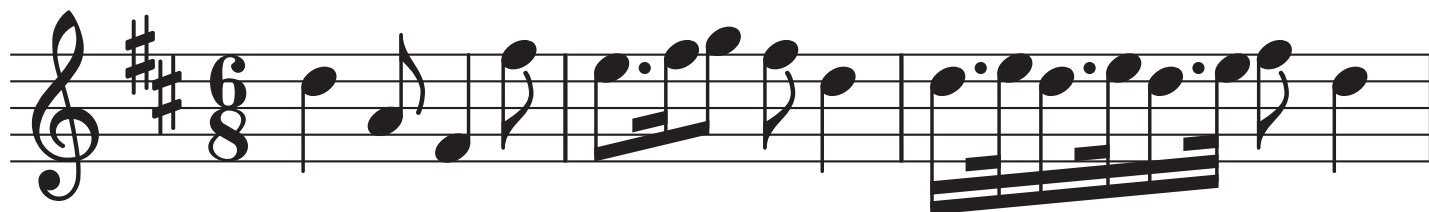
INSTRUCTIONS

Use black ink or pencil. You can use an HB pencil, but only for annotation lines.

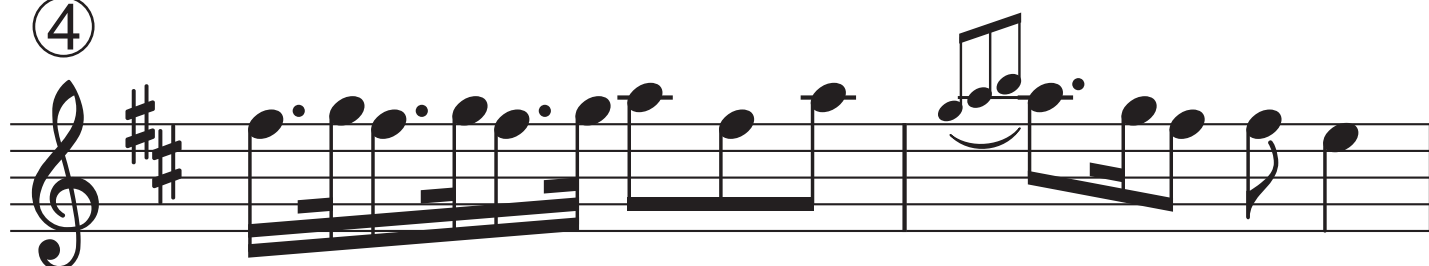
Write your answer in the space provided.

BLANK PAGE

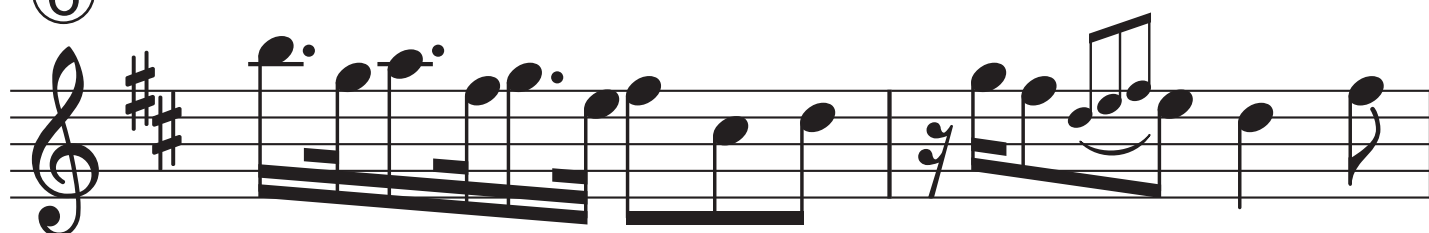
For use with Question 5



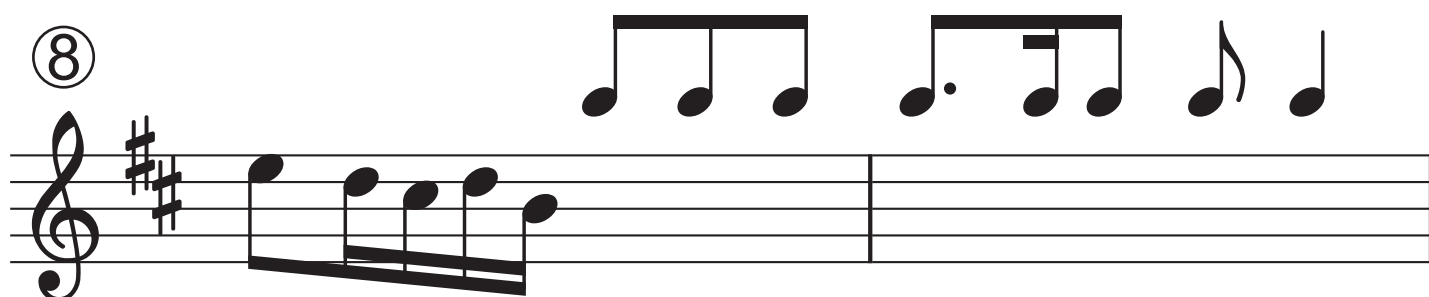
④



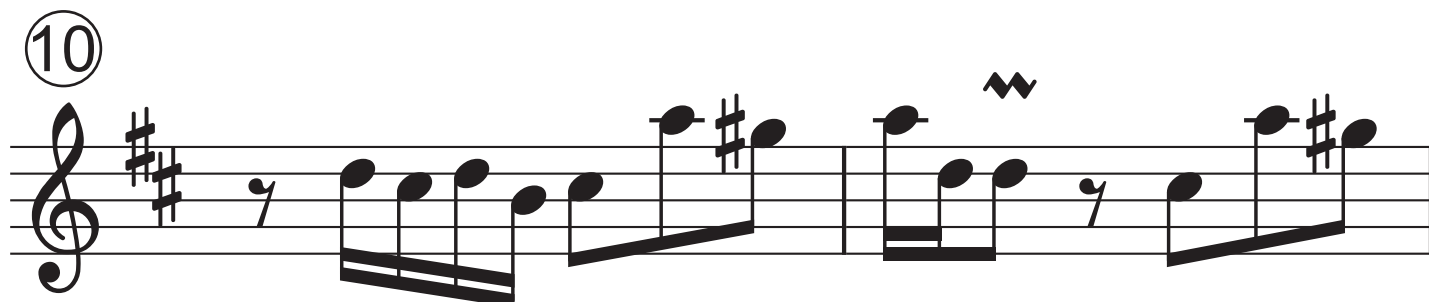
⑥



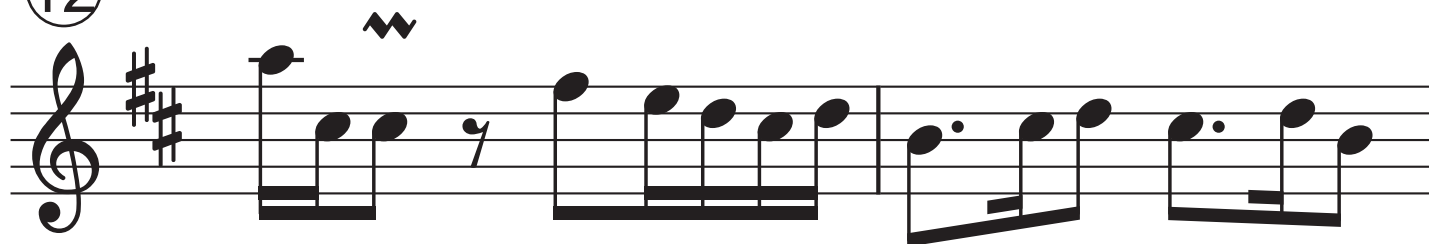
⑧



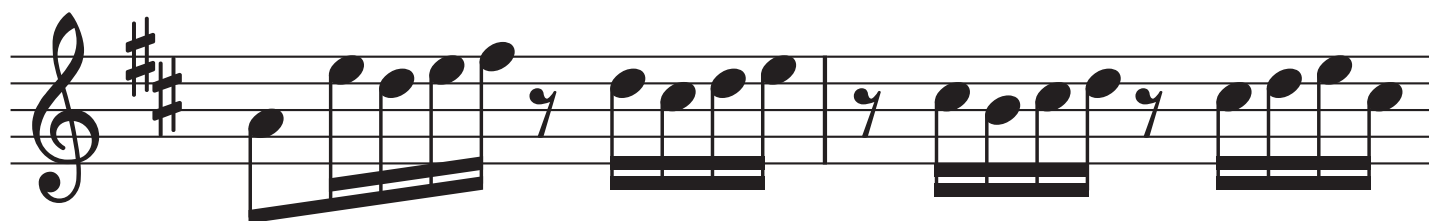
⑩



12



14



16



For use with Question 7

(Instrument)
(b)(i)

(percussion instrument)
(b)(ii)

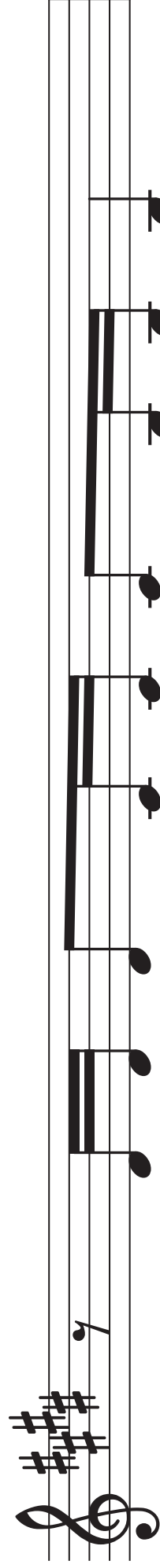
5
6

Can't be - lieve that I'm home all a - lone

⑥

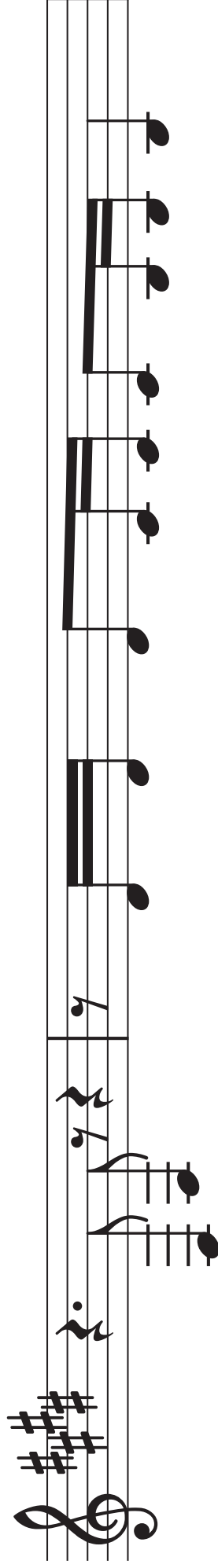
Does-n't stop me from want - ing to see you

7



Why the hell won't you pick up the phone

8



hell-o

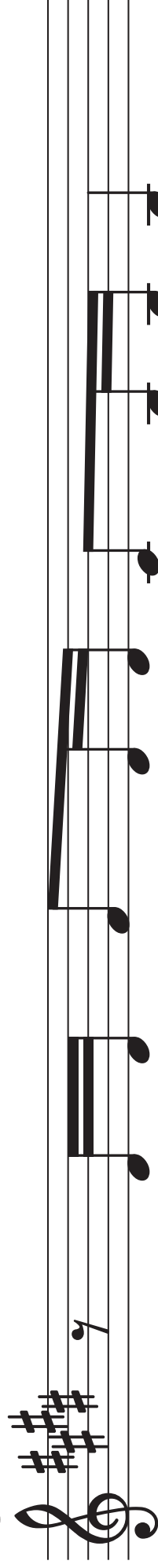
Don't know which way is up an-y-more

10



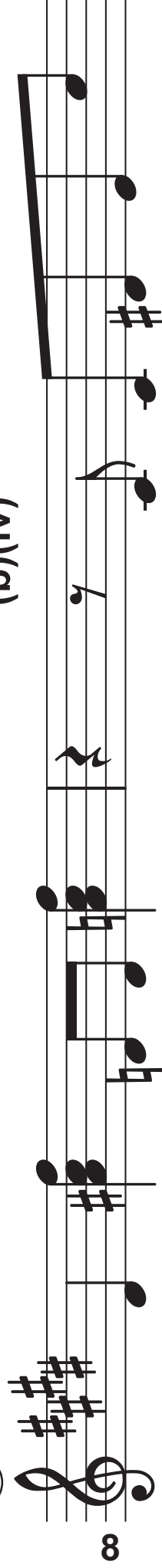
No ex-cus - es and noth - ing to cling to

11



Oh, you're shak - ing me right to the core

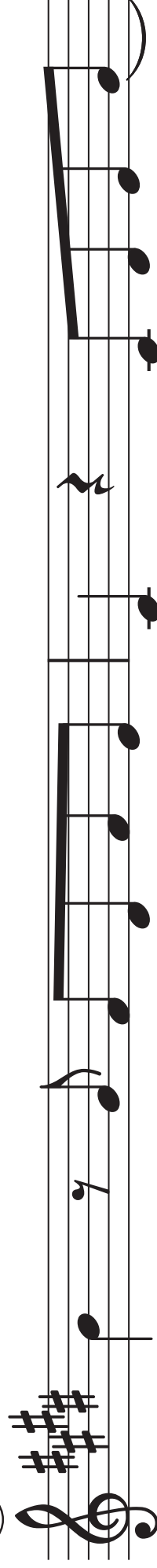
12



(instrumental family)
(b)(iv)

Just wan - na let you

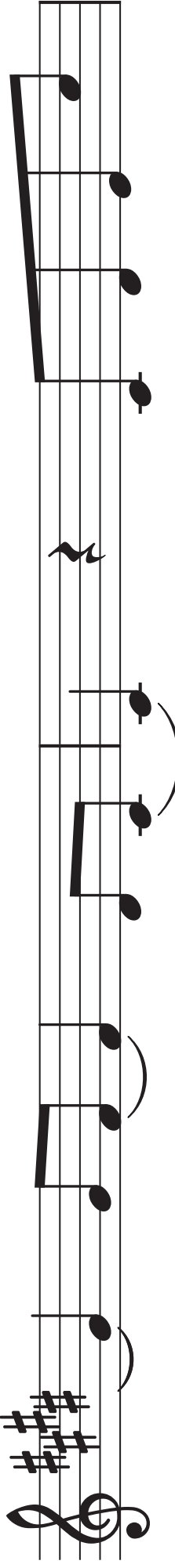
14

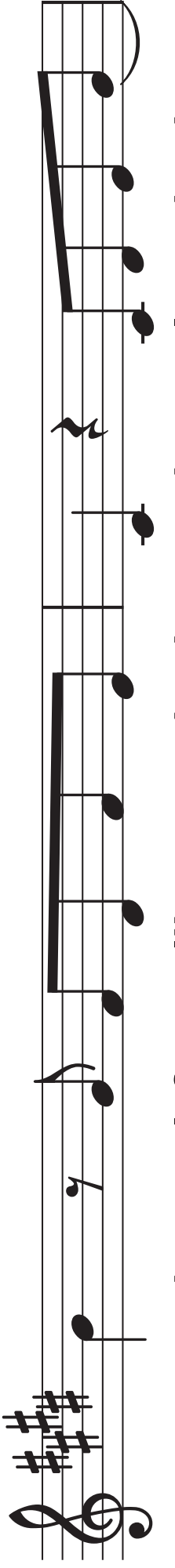


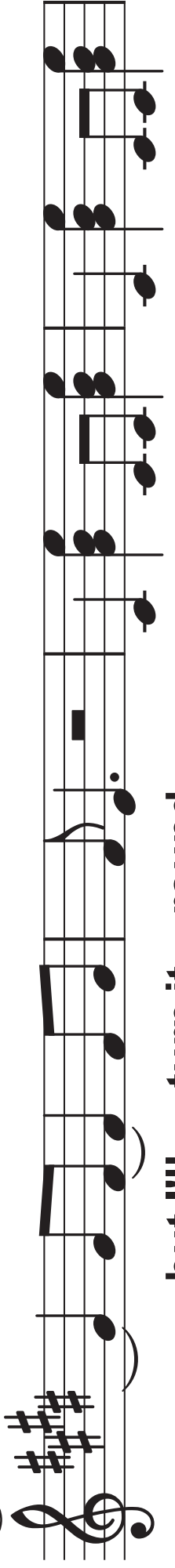
know

I won't let this one go

You got me down

16  but I ain't out Think you got me

18  good left me like some dead - wood I may be down

20  but I'll turn it round

24

Musical score for a single staff with a treble clef and a key signature of three sharps (F#, C#, G#). The score consists of four measures. The first measure contains a whole note chord of F#4, C#5, and G#5. The second measure contains a whole note chord of F#4, C#5, and G#5. The third measure contains a whole note chord of F#4, C#5, and G#5. The fourth measure contains a whole note chord of F#4, C#5, and G#5.

BLANK PAGE



Copyright Information

OCR is committed to seeking permission to reproduce all third-party content that it uses in its assessment materials. OCR has attempted to identify and contact all copyright holders whose work is used in this paper. To avoid the issue of disclosure of answer-related information to candidates, all copyright acknowledgements are reproduced in the OCR Copyright Acknowledgements Booklet. This is produced for each series of examinations and is freely available to download from our public website (www.ocr.org.uk) after the live examination series.

If OCR has unwittingly failed to correctly acknowledge or clear any third-party content in this assessment material, OCR will be happy to correct its mistake at the earliest possible opportunity.

For queries or further information please contact The OCR Copyright Team, The Triangle Building, Shaftesbury Road, Cambridge CB2 8EA.

OCR is part of the Cambridge Assessment Group; Cambridge Assessment is the brand name of University of Cambridge Local Examinations Syndicate (UCLES), which is itself a department of the University of Cambridge.